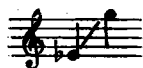


# 4. ПЕРВОЕ СВИДАНИЕ



*Allegro vivo*

*f*

*p*

Вот ми - но - ва - ла раз - лу - ка у - ны - ла - я, про - бил сви - да - ни - я

*cresc.*

час,- свет-ло - е, пол - но - е сча-сти - е, ми - ла - я,

*mf* *p* *cresc.*

вновь на - сту - пи - ло для нас.

*f*

Дол - го то - ми - ло - ся, пол - но стра - да - ни - я, серд - це тво - е, но по -

*p* *cresc.*

- верь: дни о - ди - но - чест - ва, дни ис - пы - та - ни - я

*mf* *p* *cresc.*

*dolce*

мы на - вер - ста - ем те - перь. Неж - ны - е

*mf* *p*

ре - чи, люб - ви вы - ра - же - ни - я

*cresc.*

*f*

вновь по - те - кут без кон - ца,

*espress.* *f dim.*

*mf cresc.*

и во е - ди - но - е сно - ва би -

*p cresc.*

- е - ни - е на - ши со - лют - ся серд -

- ца!

rit. Tempo I

Пусть со - че - та - ет со -

- зву - чье е - ди - но - е на - ши две ду - ши, и вновь,

*ff* rit.

слов - но ве - сен - ня - я Песнь со - ло - вьи - на - я , на - ша вос -

*f*

Detailed description: This system contains the first line of music. The vocal line is in a soprano clef with a key signature of two flats and a 4/4 time signature. It begins with a fortissimo (*ff*) dynamic and ends with a ritardando (*rit.*) marking. The piano accompaniment consists of two staves: the right hand in a treble clef and the left hand in a bass clef. The piano part starts with a forte (*f*) dynamic and features a rhythmic pattern of eighth notes with slurs and ties.

a tempo

- пря нет лю - бовь!

*ff*

*Ка* \* *Ка* \*

Detailed description: This system contains the second line of music. The vocal line continues from the first system, marked *a tempo*. It features a fermata over the word 'нет'. The piano accompaniment continues with a fortissimo (*ff*) dynamic. There are two asterisks with the word 'Ка' (Ka) written below the piano part, indicating specific performance instructions or ornaments.

Detailed description: This system shows the piano accompaniment for the third line of music. It features a complex rhythmic texture with many sixteenth and thirty-second notes, primarily in the right hand, with a more active bass line in the left hand.

Detailed description: This system shows the piano accompaniment for the fourth line of music. It continues the intricate rhythmic patterns from the previous system, with a mix of sixteenth and thirty-second notes and rests.