

Кирилл Волков

**СОНАТИНА - ЭКСПРОМТ**

---

для скрипки и фортепиано

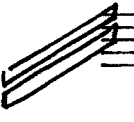
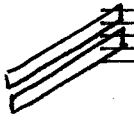
1972 г.

# Курган Велкое

Con moto

Violino

Piano



Musical score for Violino and Piano, first system. The Violino part features a melody with various articulations: *mp*, *sal D*, *sal g*, *(pizz. A.P.)*, *(arco)*, *sal D*, and *sal g*. The Piano part is currently blank.

Musical score for Violino and Piano, second system. The Violino part continues with a melody including *sal g* and *(pizz.)*. The Piano part remains blank.

Musical score for Violino and Piano, third system. The Violino part starts with a first ending bracket labeled '1' and includes *ms* and *(pizz.)*. The Piano part features accompaniment with *percuss* markings.

Handwritten musical score, first system. The top staff is a vocal line in treble clef with a key signature of one sharp (F#) and a 7/4 time signature. It begins with a circled '4' and contains various notes, rests, and ornaments. A circled '2' is placed above the staff. The piano accompaniment is in grand staff (treble and bass clefs) with a key signature of one sharp and a 7/4 time signature. It includes dynamic markings 'f' and 'mf', and a 'Ped.' marking with an asterisk. A double bar line is present.

Handwritten musical score, second system. The top staff continues the vocal line with various notes and ornaments. The piano accompaniment continues with similar rhythmic patterns and chord structures. A double bar line is present.

Handwritten musical score, third system. The top staff is marked with a circled '3' and the word 'cantande' above it. It features a complex rhythmic structure with time signature changes: 3/4, 2/4, 3/4, 2/4, 3/4. The piano accompaniment also has time signature changes: 3/4, 2/4, 3/4, 2/4, 3/4. Dynamic markings 'p' and 'sub.' are present. A double bar line is present.

4

Handwritten musical score for system 4. The system consists of three staves. The top staff is a vocal line with a treble clef and a key signature of one sharp (F#). It features a complex sequence of time signatures: 3/4, 2/4, 3/4, 4/4, 2/4, 3/4, 2/4, 3/4, 2/4, 3/4, 2/4. The middle and bottom staves are piano accompaniment. The middle staff has a grand staff (treble and bass clefs) and contains chords and melodic lines. The bottom staff is a bass line with a bass clef. Dynamics include *p* (piano) and *f* (forte). There are also slurs and accents throughout the piece.

5

Handwritten musical score for system 5. The system consists of three staves. The top staff is a vocal line with a treble clef and a key signature of one sharp (F#). It features a complex sequence of time signatures: 2/4, 3/4, 2/4, 3/4, 2/4, 3/4, 2/4, 3/4, 2/4, 3/4, 2/4. The middle and bottom staves are piano accompaniment. The middle staff has a grand staff (treble and bass clefs) and contains chords and melodic lines. The bottom staff is a bass line with a bass clef. Dynamics include *f marc.* (forte marcato) and *f star* (forte staccato). There are also slurs and accents throughout the piece.

6

*richa voce*

Handwritten musical score for system 6. The system consists of three staves. The top staff is a vocal line with a treble clef and a key signature of one sharp (F#). It features a complex sequence of time signatures: 3/4, 2/4, 3/4, 2/4, 3/4, 2/4, 3/4, 2/4, 3/4, 2/4. The middle and bottom staves are piano accompaniment. The middle staff has a grand staff (treble and bass clefs) and contains chords and melodic lines. The bottom staff is a bass line with a bass clef. Dynamics include *vibrato* and *mf* (mezzo-forte). There are also slurs and accents throughout the piece.

Handwritten musical score for the first system. The top staff is in treble clef with a 3/4 time signature. It contains several measures of music with notes, rests, and dynamic markings such as *v* and *pp*. The bottom staff is a grand staff (treble and bass clefs) with notes and rests. There are some handwritten annotations and slurs throughout the system.

Handwritten musical score for the second system. The top staff is in treble clef with a 3/4 time signature. It contains several measures of music with notes, rests, and dynamic markings such as *p* and *mp*. The bottom staff is a grand staff (treble and bass clefs) with notes and rests. There are some handwritten annotations and slurs throughout the system.

Handwritten musical score for the third system. The top staff is in treble clef with a 4/4 time signature. It contains several measures of music with notes, rests, and dynamic markings such as *p*. A circled number "7" is written in the first measure. The bottom staff is a grand staff (treble and bass clefs) with notes and rests. There are some handwritten annotations and slurs throughout the system.

Handwritten musical score for the first system. The treble clef staff contains a melodic line with a dynamic marking *v* and a *(Pizz.)* marking. The bass clef staff contains a bass line with a *9* marking. The system concludes with a double bar line.

Handwritten musical score for the second system, starting with a boxed measure number **8**. The treble clef staff features a melodic line with a dynamic marking *marc.* and a *v* marking. The bass clef staff contains a bass line with a *ped.* marking. The system concludes with a double bar line.

Handwritten musical score for the third system, starting with a boxed measure number **9**. The treble clef staff contains a melodic line with a *v* marking. The bass clef staff contains a bass line with a *ped.* marking and an asterisk *\**. The system concludes with a double bar line.

9

Handwritten musical score for measures 9-10. The system consists of three staves: a single treble clef staff at the top, and a grand staff (treble and bass clefs) below. The music is in a key with one sharp (F#) and a 4/4 time signature. Measure 9 features a melodic line in the treble staff and a complex accompaniment in the grand staff with many accidentals and slurs. Measure 10 continues the melodic and accompanimental patterns.

Handwritten musical score for measures 11-12. The system consists of three staves: a single treble clef staff at the top, and a grand staff (treble and bass clefs) below. The music continues from the previous system. Measure 11 shows a melodic line with some rests and a complex accompaniment. Measure 12 concludes the system with a final melodic phrase and accompaniment.

10

Handwritten musical score for measures 13-14. The system consists of three staves: a single treble clef staff at the top, and a grand staff (treble and bass clefs) below. Measure 13 features a melodic line with a dashed line indicating a continuation or correction. Measure 14 ends with a fermata over the final notes and the instruction *f marc.* (forzando marcato).

Handwritten musical score for the first system. It consists of a vocal line on a single staff and a piano accompaniment on two staves. The key signature has one sharp (F#) and the time signature is 4/4. The piano part includes the instruction *sf secco* and *sf*. The system concludes with a double bar line and a repeat sign.

Handwritten musical score for the second system. It features a vocal line and piano accompaniment. A measure in the vocal line is boxed and contains the number "11". The piano part includes the instruction *sf* and *sfieco*. The system ends with a double bar line and a repeat sign.

Handwritten musical score for the third system. It continues the vocal and piano parts from the previous systems. The piano part includes the instruction *sf*. The system concludes with a double bar line and a repeat sign.



Handwritten musical score for the first system. The top staff is in treble clef, showing a melodic line with slurs and ties. The bottom two staves are a grand staff (treble and bass clefs) with piano accompaniment. Dynamic markings include *ff* and *p*. There are also some handwritten annotations like "8" and "8-1" near the piano part.

Handwritten musical score for the second system, starting with a boxed number "12". The top staff is in treble clef, showing a melodic line with slurs and ties. The bottom two staves are a grand staff with piano accompaniment. Dynamic markings include *mp* and *p*. There are also some handwritten annotations like "8" and "8-1" near the piano part.

Handwritten musical score for the third system. The top staff is in treble clef, showing a melodic line with slurs and ties. The bottom two staves are a grand staff with piano accompaniment. Dynamic markings include *p* and *pans*. There are also some handwritten annotations like "8" and "8-1" near the piano part.

Handwritten musical score for the first system. The top staff is in treble clef with a key signature of one sharp (F#) and a 4/4 time signature. It contains several measures of music with notes, slurs, and dynamic markings. Annotations include "ov" above notes, "sul g" and "sul D" below notes, and "p" (piano) below notes. The bottom two staves are in bass clef and contain a few notes and rests.

Handwritten musical score for the second system. The top staff is in treble clef with a key signature of one sharp (F#) and a 4/4 time signature. It contains several measures of music with notes, slurs, and dynamic markings. Annotations include "(Pizz. mp)" above notes, "P secco" below notes, and "attacca" at the end of the system. The bottom two staves are in bass clef and contain a few notes and rests.

II

Vivo

Handwritten musical score for the third system. The top staff is in treble clef with a key signature of one sharp (F#) and a 4/4 time signature. It contains several measures of music with notes, slurs, and dynamic markings. Annotations include "P stacc. leggero" below notes. The bottom two staves are in bass clef and contain a few notes and rests.

13

Handwritten musical score for exercise 13, measures 1-4. The top staff is a treble clef with a 4/4 time signature. The bottom staff is a grand staff. The music includes notes, rests, and dynamic markings like "Pizz. A.R." and "(arco)". There are also some handwritten annotations like "Pstacc." and a "T" symbol.

Handwritten musical score for exercise 13, measures 5-8. The top staff is a treble clef with a 4/4 time signature. The bottom staff is a grand staff. The music includes notes, rests, and dynamic markings like "Pstacc." and a "T" symbol.

14

Handwritten musical score for exercise 14, measures 1-4. The top staff is a treble clef with a 4/4 time signature. The bottom staff is a grand staff. The music includes notes, rests, and dynamic markings like "Pstacc." and a "T" symbol. There is also a handwritten asterisk and the number "8" with a dashed line.

\* ) видеть партитуру левой руки

Handwritten musical score for the first system, featuring a treble clef staff with a melodic line and a grand staff with piano accompaniment. The key signature has two sharps (F# and C#). The piano part includes eighth-note patterns and slurs. There are some corrections in the treble staff.

15

Handwritten musical score for the second system, starting with a treble clef staff and a grand staff. The treble staff has a melodic line with slurs and accents. The piano part has a steady eighth-note accompaniment. The marking "Psub. stacc." is present in both staves.

Handwritten musical score for the third system, featuring a treble clef staff and a grand staff. The treble staff has a melodic line with slurs and accents. The piano part has a steady eighth-note accompaniment. The marking "f secco" is present in the piano part.

16

Handwritten musical score for measures 16-17. The score is written on a grand staff with treble and bass clefs. Measure 16 features a melodic line in the treble clef with eighth and sixteenth notes, and a piano accompaniment in the bass clef with chords and a dynamic marking of *p*. Measure 17 continues the melodic line and includes a dynamic marking of *f*. The piece concludes with a double bar line and a fermata over the final chord.

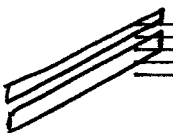
17

Handwritten musical score for measures 18-19. The score is written on a grand staff. Measure 18 features a melodic line in the treble clef with a dynamic marking of *p* and a piano accompaniment in the bass clef with chords and a dynamic marking of *p*. Measure 19 continues the melodic line and includes a dynamic marking of *piu tenuto*. The piece concludes with a double bar line and a fermata over the final chord.

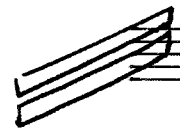
Handwritten musical score for measures 20-21. The score is written on a grand staff. Measure 20 features a melodic line in the treble clef with a dynamic marking of *p* and a piano accompaniment in the bass clef with chords and a dynamic marking of *p*. Measure 21 continues the melodic line and includes a dynamic marking of *p*. The piece concludes with a double bar line and a fermata over the final chord.

18

Handwritten musical score for system 18. The system consists of three staves. The top staff is a treble clef staff with a melodic line. The bottom two staves are a grand staff (treble and bass clefs) with piano accompaniment. The music includes various notes, rests, and dynamic markings such as *f* and *p*. There are also some handwritten annotations like "8-1-1" and "8-2-1" below the grand staff.



Handwritten musical score for system 19. The system consists of three staves. The top staff is a treble clef staff with a melodic line. The bottom two staves are a grand staff (treble and bass clefs) with piano accompaniment. The music includes various notes, rests, and dynamic markings such as *ff* and *p*. There are also some handwritten annotations like "8-1-1" and "8-2-1" below the grand staff.



19

Handwritten musical score for system 20. The system consists of three staves. The top staff is a treble clef staff with a melodic line. The bottom two staves are a grand staff (treble and bass clefs) with piano accompaniment. The music includes various notes, rests, and dynamic markings such as *mp* and *p*. There are also some handwritten annotations like "8-1-1" below the grand staff.

19

20

*dim.*

*sosten. poco*

Handwritten musical score for the first system. The treble clef staff contains a melodic line with notes, rests, and a '3' marking. The instruction *(non cresc.)* is written below the staff. The piano accompaniment is shown in a grand staff with a '(arco)' marking.

Handwritten musical score for the second system, starting with a double bar line and a box containing the number '21'. The treble clef staff has a key signature of two flats and a 4/8 time signature. The piano accompaniment includes the instruction *Pstacc.secco*.

Handwritten musical score for the third system, featuring a treble clef staff with triplets and a *crescendo* instruction. The piano accompaniment continues with accompaniment.



22

Handwritten musical score for exercise 22, first system. The system consists of three staves. The top staff is a single treble clef staff with a key signature of one sharp (F#) and a 4/4 time signature. It contains a melodic line with several triplet markings (indicated by a '3' above the notes) and some slurs. The middle and bottom staves are a grand staff (treble and bass clefs). The bass staff contains a bass line with various chords and notes, including some with accidentals. The dynamic marking *mf marcatisissimo, secco* is written above the bass staff. The system ends with a double bar line.

Handwritten musical score for exercise 22, second system. The system consists of three staves. The top staff is a single treble clef staff with a key signature of one sharp (F#) and a 4/4 time signature. It contains a melodic line with several triplet markings (indicated by a '3' above the notes) and some slurs. The middle and bottom staves are a grand staff (treble and bass clefs). The bass staff contains a bass line with various chords and notes, including some with accidentals. The system ends with a double bar line.

23

Handwritten musical score for exercise 23. The system consists of three staves. The top staff is a single treble clef staff with a key signature of one sharp (F#) and a 4/4 time signature. It contains a melodic line with several triplet markings (indicated by a '3' above the notes) and some slurs. The middle and bottom staves are a grand staff (treble and bass clefs). The bass staff contains a bass line with various chords and notes, including some with accidentals. The system ends with a double bar line.

Handwritten musical score for the first system. The top staff is in treble clef with a key signature of one flat and a 4/4 time signature. It contains notes, rests, and accents, with dynamics such as *sf*. The grand staff below shows chords and triplets in both hands. The right hand has triplets of eighth notes, and the left hand has triplets of quarter notes. There are also some handwritten annotations like *(b)* and *sf*.

Handwritten musical score for the second system. The top staff continues with notes and rests, including a triplet and a long note with a slur. Dynamics include *sf*, *sf+*, and *sf*. Performance instructions include *(pizz. n.p.)*, *ten. poco*, and *secco*. The grand staff shows chords and triplets. There are also some handwritten annotations like *(na. p.)* and *sf*.

*Violino* *Con moto* *mp* *sul D* *pizz. (a.p.)* *(arco)* *sul D* *sul G*

*(Pizz.)* *sul D* *sul G*

*1* *mf* *(Pizz.)*

*2*

*3 cantande* *pp sub.*

*4*

*5* *f marc.*

*6 piena voce* *vibrato*



11

Handwritten musical notation on a single staff. It begins with a treble clef and a 4/4 time signature. The music starts with a whole note chord, followed by a series of eighth and sixteenth notes. The word "détaché" is written below the first few notes.

Continuation of the musical notation from the first line. It features a series of eighth notes and some chords. The dynamic marking "ff" is present, followed by "mp" and a plus sign (+).

12

Handwritten musical notation on a single staff. It starts with a treble clef and a 4/4 time signature. The music consists of a series of notes with slurs and accents. The dynamic marking "mp" is written above the staff.

Continuation of the musical notation from the first line. It includes various note values and slurs. The dynamic marking "subB" is written below the staff.

Continuation of the musical notation from the first line. It features a series of notes with slurs and accents. The dynamic marking "(subB)" is written below the staff. At the end of the line, there is a circled "2" and the word "attacca" written below the staff.

# Vivo

Кирпичи дождя

*P stacc. leggero*

13 *(pizz. n.p.)* *(arco)*

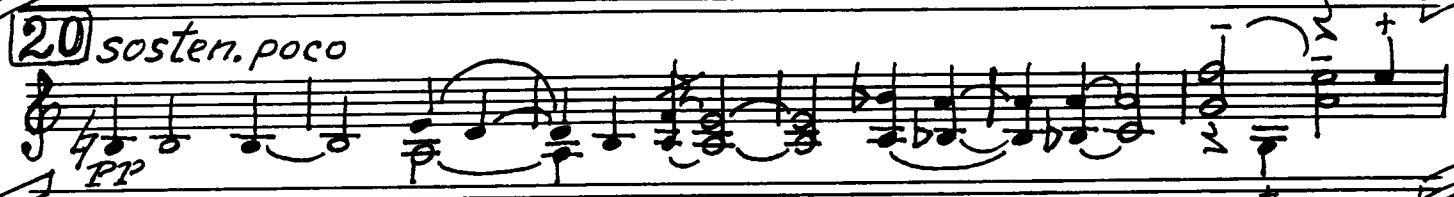
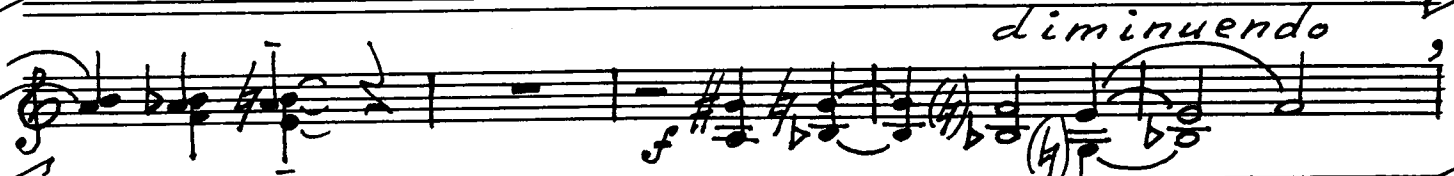
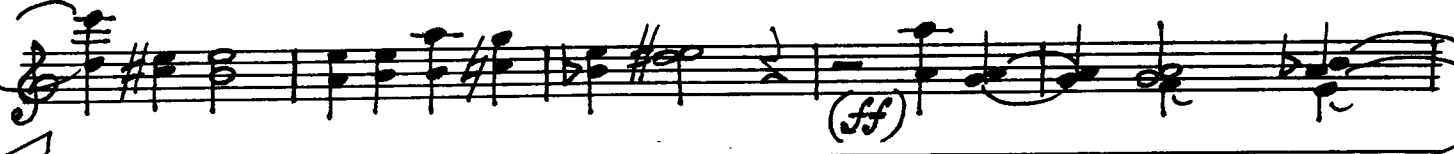
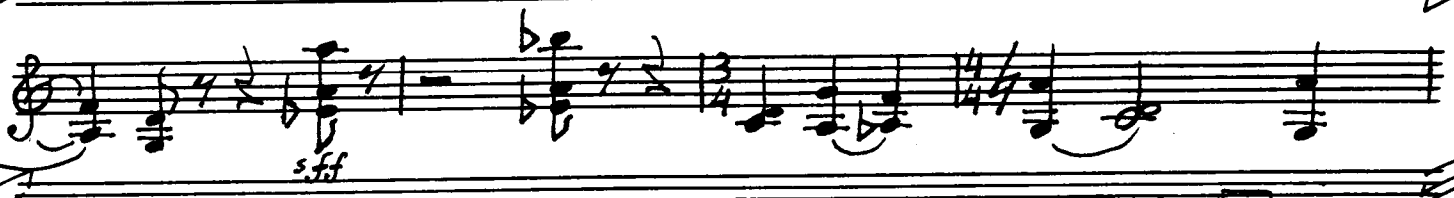
14

15 *P sub. stacc.*

*f secco*

16 *(f)*

17



22

23