

*Con moto* ( $\text{♩} = 120$ )

*p* *pp*

*Con moto* ( $\text{♩} = 120$ )

*p* *mp*

*mp* *(mp)*

*p*

Handwritten musical score, first system. The top staff is a single melodic line in treble clef with a 4/4 time signature and a *suED* annotation. The bottom two staves are a piano accompaniment in grand staff (treble and bass clefs). The piano part features complex rhythmic patterns and rests, with time signatures of 5/16, 6/16, and 13/8 indicated above the staves.

Handwritten musical score, second system. The top staff continues the melodic line with a 9/8 time signature and a circled '2' above it. The piano accompaniment below is marked with a piano (*p*) dynamic. The piano part includes a circled '2' and time signatures of 10/16, 5/16, 4/8, and 5/16.

Handwritten musical score, third system. The top staff features a highly rhythmic and complex melodic line with many sixteenth notes and rests. The piano accompaniment below is marked with a mezzo-piano (*mp*) dynamic and includes a circled '3' and a time signature of 9/16. The piano part also has a circled '3' and a time signature of 6/8.

Vc. *mp*

19/16 12/16

*pp*

Vc. *(mp)*

21/16 12/16

*p*

Vc. *mf detache e marc. poco*

16/16 19/16

Vc.  $\frac{12}{16}$   $\frac{7}{16}$   $\frac{40}{16}$

**5** *mf* *mp*

Vc. *mf* *mp* *sf* *mf* *mp*

*(pizz.) (arco)*

$\frac{13}{16}$  **6**  $\frac{6}{8}$

*mp* *sf* *mf* *mp*

Vc. *sf* *mf* *mf* *mf* *mf*

$\frac{5}{8}$   $\frac{7}{8}$   $\frac{13}{16}$

V.C.

6/8

*mp*

*mp*

V.C.

*rit. detache*

10/8

*mp*

V.C.

15/16

*mp*

1-c.

*f*

$\frac{17}{16}$   $\frac{7}{16}$   $\frac{7}{8}$

(non stacc.)

*dim.*

$\frac{13}{16}$   $\frac{6}{8}$   $\frac{5}{8}$

*poco più tranquillo*

*mp espr.*

*poco più tranquillo*

$\frac{6}{8}$   $\frac{7}{8}$   $\frac{6}{8}$

*Allegro*

Handwritten musical score for the first system. It consists of a treble clef staff and a grand staff. The tempo is marked *Allegro*. The first staff has a measure with a circled '9' and a *mf* dynamic marking. The grand staff has a circled '9' and a *mp* dynamic marking. The second staff has a circled '9' and a *mf* dynamic marking. The third staff has a circled '9' and a *mp* dynamic marking.

Handwritten musical score for the second system. It consists of a treble clef staff and a grand staff. The tempo is marked *Allegro*. The first staff has a circled '10' and a *f* dynamic marking. The grand staff has a circled '10' and a *f* dynamic marking. The second staff has a circled '10' and a *f* dynamic marking. The third staff has a circled '10' and a *f* dynamic marking.

Handwritten musical score for the third system. It consists of a treble clef staff and a grand staff. The tempo is marked *Allegro*. The first staff has a circled '11' and a *p* dynamic marking. The grand staff has a circled '11' and a *p* dynamic marking. The second staff has a circled '11' and a *p* dynamic marking. The third staff has a circled '11' and a *p* dynamic marking.

$\text{♩} = \text{♩}$  *Sosten. poco*

Handwritten musical score for the first system. The top staff is for the violin, starting with a  $v$  marking. The piano accompaniment consists of two staves. The tempo is marked *Sosten. poco*. Dynamics include *mf* and *sim.* (sostenuto). There are several *2* markings above notes in the piano part, indicating a second ending or a specific fingering. The key signature has two sharps (F# and C#).

Handwritten musical score for the second system. The top staff continues the violin part. The piano accompaniment has a boxed measure in the middle. Dynamics include *mf* and *mp*. The key signature remains two sharps.

Handwritten musical score for the third system. The top staff continues the violin part. The piano accompaniment features a  $21/16$  time signature. Dynamics include *mp* and *P* (piano). The key signature remains two sharps.



Handwritten musical score for the first system. It features a vocal line at the top and a piano accompaniment below. The piano part includes a grand staff with treble and bass clefs. A boxed measure number '12' is present. Dynamic markings include *pp* and *p*. Time signatures  $\frac{15}{16}$  and  $\frac{11}{16}$  are indicated. The system concludes with a double bar line and a key signature change to two flats.

Handwritten musical score for the second system. It continues the vocal and piano parts. The piano part features a grand staff with treble and bass clefs. Dynamic markings include *pp* and *ten. poco*. Time signatures  $\frac{14}{16}$  and  $\frac{10}{16}$  are indicated. The system concludes with a double bar line.

*(ritacca)*

# II

*Sostenuto molto* (♩=60)

*Viollo solo*

*P espr. molto e vibrato*

*Sostenuto molto* (♩=60)

$\frac{3}{2}$

$\frac{5}{4}$

13

$\frac{4}{4}$

*mp*

14

$\frac{4}{4}$

Handwritten musical score, first system. It consists of three staves. The top staff is a single melodic line in treble clef, starting with a dynamic marking of *mf*. The middle and bottom staves are a grand staff (treble and bass clefs) with chords and accompaniment. A box containing the number "14" is written in the left margin, with a slash and a fraction  $\frac{7}{8}$  next to it. The time signature  $\frac{7}{8}$  is also written in the right margin.

Handwritten musical score, second system. It consists of three staves. The top staff continues the melodic line. The middle and bottom staves continue the accompaniment. A box containing the number "15" is written in the right margin, with a slash and a fraction  $\frac{6}{4}$  next to it. The time signature  $\frac{6}{4}$  is also written in the right margin. A dynamic marking of *mp* is present in the bottom staff.

Handwritten musical score, third system. It consists of three staves. The top staff continues the melodic line. The middle and bottom staves continue the accompaniment.

Handwritten musical score for measures 14 and 15. The system consists of three staves. The top staff is a single melodic line. The middle and bottom staves are a grand staff (treble and bass clefs). The time signature is 7/4. The music features complex rhythmic patterns with many beamed notes and slurs.

Handwritten musical score for measures 16 and 17. The system consists of three staves. The top staff is a single melodic line. The middle and bottom staves are a grand staff. The time signature is 6/4. The music features complex rhythmic patterns with many beamed notes and slurs. A box around the measure number '16' contains the text *detache (e marc. poco)*. The time signature changes to 7/4 at the start of measure 17.

Handwritten musical score for measures 18 and 19. The system consists of three staves. The top staff is a single melodic line. The middle and bottom staves are a grand staff. The time signature is 9/4. The music features complex rhythmic patterns with many beamed notes and slurs. A box around the measure number '17' contains the text  $\frac{3}{2}$ . The time signature changes to 3/2 at the start of measure 19. The bottom staff has a *pp* marking.

Handwritten musical score system 1. It consists of four staves. The top staff is a single melodic line. The second staff is a treble clef line. The third and fourth staves are a grand staff (treble and bass clefs). The time signature is 5/4. The key signature has one sharp (F#). The music features complex rhythmic patterns and slurs.

Handwritten musical score system 2. It consists of four staves. The top staff is a single melodic line. The second staff is a treble clef line. The third and fourth staves are a grand staff. The time signature is 12/8. The key signature has one sharp (F#). The music includes a measure with a boxed number '18' and the instruction 'ff detache' written above it. The bottom two staves of the grand staff have rests.

Handwritten musical score system 3. It consists of four staves. The top staff is a single melodic line. The second staff is a treble clef line. The third and fourth staves are a grand staff. The time signature is 5/4. The key signature has one sharp (F#). The music features complex rhythmic patterns and slurs.

*f espr. vibr. molto*

**19**  $\frac{5}{4}$   $\frac{4}{4}$

*mf* *mp*

*mp* *p* *pp* *ten. poco*

$\frac{7}{4}$   $\frac{4}{4}$

*mp* *p* *pp* *ten. poco* *[morendo]*

ano. 1996r.

# СОНАТА

ДЛЯ ВИОЛОНЧЕЛИ И ОРГАНА

ПАРТИЯ ВИОЛОНЧЕЛИ

## I

*Con moto* ( $\text{♩} = 120$ )

cello solo

*p* *pp*

*mp*

1

*p*

*p*

2

*p*

*p*

19/16 *mp*

21/16 **4** 12/16 *(mp)*

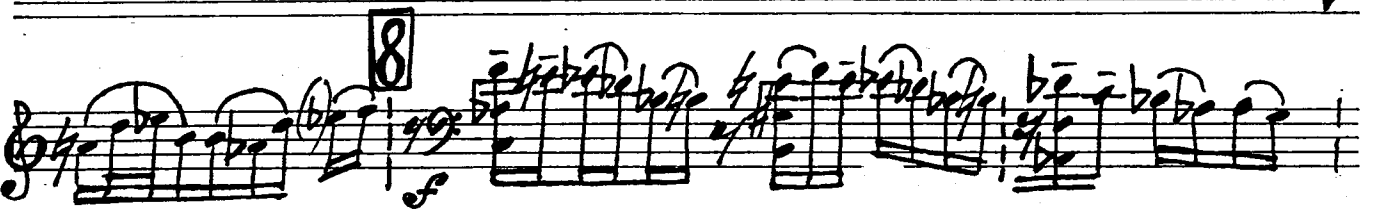
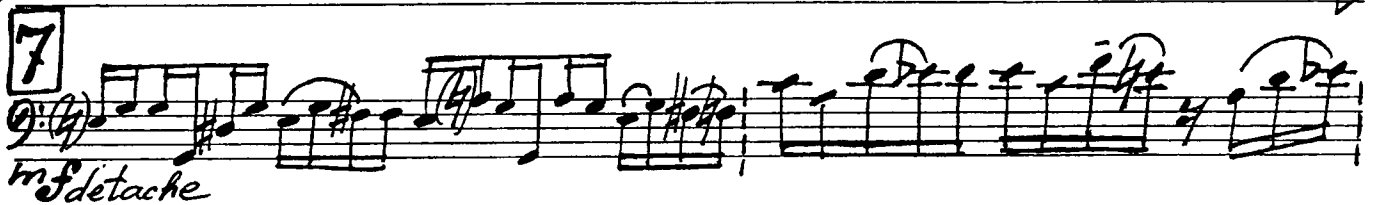
16/16 19/16 *mf detache (e marc. poco)*

**5** 12/16 7/16

**6** *(pizz.) (arco)* *sf in mf*

*pizz. (arco)* *sf*





*Allegro*

Handwritten musical notation on a single staff. It begins with a treble clef and a key signature of one sharp (F#). The music consists of several measures of eighth and sixteenth notes. A dynamic marking of *mf* is present. The staff ends with a double bar line.

Handwritten musical notation on a grand staff (treble and bass clefs). A boxed measure number "10" is placed above the staff. The music continues with eighth and sixteenth notes. A dynamic marking of *mf* is visible.

*a piacere*

*(marc. poco)*

Handwritten musical notation on a single staff. It features a treble clef and a key signature of one sharp. The music includes slurs and a dynamic marking of *mf*. The staff concludes with a double bar line.

*Sosten.*

Handwritten musical notation on a single staff. It starts with a treble clef and a key signature of two sharps (F# and C#). The music is marked with *mf* and *mp*. A boxed measure number "11" is located above the staff.

Handwritten musical notation on a single staff. It begins with a bass clef and a key signature of one sharp. The music features slurs and dynamic markings of *mp*. A boxed measure number "12" is placed above the staff.

Handwritten musical notation on a single staff. It starts with a bass clef and a key signature of one sharp. The music includes slurs and dynamic markings of *pp* and *ten.*. The word "Cattaccà" is written below the staff.

# II

*Sostenuto molto* (♩=60)

First musical staff, bass clef, 2/4 time signature. The music consists of a series of chords and eighth notes, with a tempo marking of 60 quarter notes per minute. The instruction *Pespr. molto e vibrato* is written below the staff.

*Pespr. molto e vibrato*

13

Second musical staff, treble clef. It continues the melodic line from the first staff, featuring eighth and sixteenth notes.

14

Third musical staff, bass clef. It continues the melodic line, including a dynamic marking of *mf* (mezzo-forte).

Fourth musical staff, treble clef. It continues the melodic line with various rhythmic values and accidentals.

15

Fifth musical staff, bass clef. It continues the melodic line, featuring a variety of note values and rests.

16

Sixth musical staff, treble clef. It concludes the melodic line with a final chord and a fermata.

16

*f detache (e marc. poco)*

*p*

18

*ff detache*

19

*f espr. vibr. molto*

*mf mp p ten. poco*